

SOQUEL HIGH SCHOOL PERFORMING ARTS CENTER

PROGRAMMING REPORT & SITE LOCATION



● PROGRAMMING MEETING 3:

AGENDA

- INTRODUCTION
- EQUITY
- PROGRAM
- PRECEDENT – OVERVIEW RECAP
- CONCEPTUAL SITE LAYOUTS

● EQUITY WITHIN THE DISTRICT

Santa Cruz City SCHOOL DISTRICT Seat Count Comparison

Space Program Planner January 15, 2021					Comments
SCHOOL	CURRENTLY ENROLLMENT	SEAT CAPACITY	RATIO SEATS/ENROLLMENT	YEAR BUILT	
HARBOR HIGH SCHOOL	935	332	0.36	2002	
SANTA CRUZ HIGH SCHOOL	1,106	542	0.49	1997	Not included in averages
APTOS HIGH SCHOOL	1,432	450	0.31	2005	
PAJARO VALLEY HIGH SCHOOL	1,436	450	0.31	N/A	Unbuilt
WATSONVILLE HIGH SCHOOL	2,170	543	0.25	1988	
SAN LORENZO VALLEY HS	737	210	0.28	2013	
HIGH SCHOOL AVERAGE	1,303	421	0.3		
SOQUEL HIGH SCHOOL	1,078	361	0.3		*RECOMMEND 400 FIXED SEATS FOR PLANNING PURPOSES, PLUS FLEX

● PROGRAM

Project Goals:

- To create a performing arts center that can be utilized by the school and the community.
- A state-of-the-art environment that encourages the student to grow and learn.
- Create learning environments that are adaptable to growth
- Flexibility in Use and adaptable to emerging CTE programs involving the digital and sound arts



PROGRAM

DATA THAT DEFINES THE SPACE – DRAFT CALCULATION



SANTA CRUZ CITY SCHOOLS DISTRICT

Creating and supporting learning environments that challenge and enable students to achieve their highest potential.



Detailed Space Program

Soquel High School Space Program Planner January 4,2021					Performing Arts
	SPACE	NET SQ.FT.	GROSS SQ. FT.	APTOS HS	COMMENTS
A	PATRON AMENITIES	1,580	2,238	3,482	65% GF
A.1	Lobby/Gallery	800		2231	
A.2	Box Office	75		76	2 outside windows/serves as concessions, catering accomodations
A.3	Concessions	0		225	concessions
A.3	Front of House Storage	225		100	concessions closet, event furniture to be rented
A.4	Women's Restrooms	290		450	for 200; provide 1 per 65 = 7
A.5	Men's Restrooms	190		400	for 200; provide 1 per 125 = 4
B	MAIN THEATRE	6,525	10,875	7,526	60% GF
	AUDITORIUM	3,600		4,559	6,000
B.1	Seating Area	3,500		4,191	10 sf/person
B.2	Sound & Light Locks	100		368	50 sf each, others in gross
	STAGE & TECHNICAL AREAS	2,925		2,967	4,875
B.3	Stage	2,250		2,593	50' x 80' stage; 6' crossover in gross
B.4	Forestage Apron	160		187	8' x 40'
B.5	Orchestra Pit	240			40' X 20' - sized for 20 musicians
B.6	Dimmer Room	75	*	187	
B.7	Amplifier Room	75	*		
B.8	Control Room	125		144	raised, requires lift - dual functioning - teaching space



PROGRAM

DATA THAT DEFINES THE SPACE – DRAFT CALCULATION

Soquel High School				Performing Arts	
	SPACE	NET SQ.FT.	GROSS SQ. FT.	APTOS HS	COMMENTS
C	BACKSTAGE SUPPORT	1,715	1,523	1,809	65% GF
	C.1 Backstage Restrooms	150	*	130	50 sf ea.
	C.2 Men's Changing Room	100	*	57	lockers, bench
	C.3 Women's Changing Room	150	*	57	lockers, bench
	C.4 Green Room	140	*	203	Counter, make up mirrors, lighting, storage - Space for 15-20
	C.4 Shell storage	100		150	10'x15' adjacent to stage
	C.5 Piano Storage	100		150	large instruments (piano, chair,s stands)
	C.6 Backstage Storage	200		200	band/choral risers
	C.7 Receiving/Staging	150		150	At exterior loading door, high clear space
	C.8 Scene Yard	625		712	At exterior loading door, high clear space, secure area for scene assembly
D	DRAMA SUITE	1,425	2,192	1,910	65% GF
	D.1 Drama Classroom	1,200	*	1,685	barre, mirror, suspension floor
	D.2 Faculty Office/Control Room	100	*	100	adjacent to Drama Class with window
	D.3 Drama Classroom Storage	125	*	125	
AREA TOTALS					
Total NET Are, Sq. Ft.		11,245			
Total GROSS Area, Sq. Ft.		16,829			Exist = 89%; Am. Can. = 60%; Carmel = 62%
Minimum Footprint, Sq. Ft.		14,383			Minimum foot print is the smalles possible foot pring if all possible spaces are placed on other levels.

* Room may be placed on upper levels, see room data sheets for restrictions on doing so.

*GF = Grossing Factor



PROGRAM

DATA THAT DEFINES THE SPACE – DRAFT CALCULATION

Soquel High School				Performing Arts	
	SPACE	NET SQ.FT.	GROSS SQ. FT.	APTOS HS	COMMENTS
E	STORAGE - ALTERNATE	1,050	1538	1,219	65% GF
	D.1 Scene Storage	400		619	high clear space
	D.2 Props Storage	250	*	272	
	D.3 Costume Storage	300	*	270	
	D.4 Tool Room	100		58	
	Total NET Are, Sq. Ft.	1,000			
	Total GROSS Area, Sq. Ft.	1,538			
F	MUSIC SUITE	2,200	2308	2,347	65% GF
	F.1 Band Room	1,260	*	1,959	acoustics to be high priority
	F.2 Faculty Office	80	*	150	
	F.3 Practice Room	360	*	238	4 @ 90sf each
	F.4 Instrument Storage	200	*		Locking Storage
	F.5 Recording Studio	300	*		Three room studio Locking, acoustics high priority
	Total NET Are, Sq. Ft.	2,200			
	Total GROSS Area, Sq. Ft.	0			
	Estimated Footprint, Sq. Ft.				Minimum foot print is the smallest possible foot print if all possible spaces are placed on other levels.

* Room may be placed on upper levels, see room data sheets for restrictions on doing so.

*GF = Grossing Factor

Soquel High School Performing Arts Theatre Facilities Recommendations Report

● PROGRAMS

Discussion:

Discuss and correct assumed program statements.

DESIGN AND ACOUSTIC CONSIDERATIONS:

USE AND PRIORITIES:

GENERAL: THE THEATER WILL FUNCTION AS A MULTI-PURPOSE PERFORMANCE VENUE FOR A VARIETY OF THEATRICAL, MUSICAL AND DANCE PERFORMANCES FOR UP TO (400) SEATED AUDIENCE. THE ROOM WILL ALSO FUNCTION AS A LECTURE SPACE WITH MULTIMEDIA SUPPORT

STAFFING: AS FOR THE AUDIO OPERATOR FUNCTION, WE ASSUME THAT SUPPORT PERSONNEL WILL ALWAYS BE REQUIRED TO OPERATE AND ADJUST VARIABLE ACOUSTIC CONTROL SYSTEMS, DEPLOY AND STORE AN ORCHESTRA SHELL (IF PROVIDED), THE SOUND SYSTEM, VIDEO, AND OTHER SYSTEMS.

● PROGRAMS

DESIGN AND ACOUSTIC CONSIDERATIONS:

SOUND ISOLATION:

Discussion:

Design considerations related to the proximity to other noisy programs

THEATER AND STAGE HOUSE PROPER: SOUND AND LIGHT-LOCK VESTIBULES WILL FEED PATRONS INTO THE AUDIENCE CHAMBER. DOORS TO BE FULL-PERIMETER GASKETED AND VESTIBULES FINISHED TO BE AS SOUND-ABSORPTIVE AS REASONABLY POSSIBLE, INCLUDING CARPET.

SOUND-ISOLATING CONSTRUCTIONS: GIVEN THE PROSPECT OF CONCURRENT ACTIVITIES IN NEARBY OR ADJACENT NOISE- GENERATING AND NOISE-SENSITIVE SPACES THE CONSTRUCTION ASSEMBLIES SEPARATING THESE MUST BRING SOUND TRANSMISSION TO NEAR INAUDIBILITY.

● PROGRAMS

DESIGN AND ACOUSTIC CONSIDERATIONS:

ROOM ACOUSTICS:

AUDIENCE CHAMBER

PLANNING: FOR UNAMPLIFIED MUSIC AND SPEECH ESPECIALLY A “MODIFIED SHOE-BOX” FORM IN PLAN, AT LEAST, IS IDEAL. SPECIFIC SIDE WALL SHAPING SHOULD PROVIDE SMOOTHLY-CURVED CONVEX-TO-AUDIENCE (IN PLAN) SHAPING SUCH THAT SOUND APPROACHING FROM THE STAGE IS GENERALLY RE-DIRECTED TO PROPAGATE PARALLEL TO THE AUDIENCE SEATING ROWS. THE CEILING VOLUME SHOULD BE APPROXIMATELY 50-60% OPEN TO ABOVE.

AUDITORIUM: ALL FIXED CHAIRS AND ADA SEATING LOCATIONS

Discussion:

Basic design premise:
Traditional theater,
black box, etc.??

● PROGRAMS

Discussion:

Sizing the lobby will be an important factor in controlling the cost of the building.

PATRON AMENITIES:

LOBBY/GALLERY: THIS ROOM IS THE AUDIENCE ENTRY AND GATHERING SPACE FOR THE THEATER.

BOX OFFICE/CONCESSIONS: THIS ROOM IS A SMALL BOX OFFICE WITH WINDOWS/COUNTER FOR DISTRIBUTING/SALES OF TICKETS. IT MAY DOUBLE AS A CONCESSIONS COUNTER DURING INTERMISSION. A ROLLING CONCESSIONS COUNTER TO BE SET COULD BE IN LIEU OF PROVIDING A CONCESSIONS SPACE.

STORAGE: THIS ROOM IS A STORAGE ROOM FOR FRONT OF HOUSE OPERATIONS.

PUBLIC RESTROOMS: THIS ROOM IS A PUBLIC RESTROOM, SIZED FOR ½ THE AUDIENCE FOR THE RUSH AT INTERMISSION.

● PROGRAMS

Discussion:

Size of stage will be determined by program and use.

MAIN THEATRE AUDITORIUM:

STAGE: THIS IS THE PERFORMANCE AREA OF THE MAIN STAGE THEATER.

IT IS APPROPRIATE IN THE CONTROL OF ON-STAGE FLUTTER ECHOES THAT AT LEAST ONE OF THE SIDE WALLS RECEIVE SOUND ABSORPTIVE TREATMENT. SIZED TO PROPERLY ACCOMMODATE UP TO (APPROXIMATELY 40) MUSICIANS.

SEATING AREA

SEATING TBD BASED ON RATIO OF ENROLLMENT COUNT. SEATING WILL BE FIXED WITH A CENTER WALKWAY THIS WILL BE A FORMAL SPACE WITH HIGH END FINISHES. ACOUSTICS WILL BE ADDRESSED WITH EVALUATION.

ORCHESTRA PIT (IF PROVIDED)

UP TO 20 SEATED MUSICIANS COVERING APPROXIMATELY 240SF WITH THEIR INSTRUMENTS. TO CONTROL EXCESS LOUDNESS, THE PIT WOULD BE SUNKEN AS DEEP.

● PROGRAMS

Discussion:

Size of stage will be determined by program and use.

TECHNICAL AREAS:

CONTROL ROOM: THIS ROOM WILL HAVE ACCESS TO THE AUDITORIUM WITH ACOUSTICAL SEPARATION. THIS ROOM IS SET BACK IN THE SPACE USUALLY SPLIT LEVEL AND IS USED FOR CONTROLLING ALL FUNCTIONS OF A PRODUCTION.

AMPLIFIER ROOM:

DEDICATED SPACE FOR AV EQUIPMENT

DIMMER ROOM

TECHNICAL SPACE THAT HOUSES ALL CONTROLS FOR LIGHTING FOR AND ASSOCIATED EQUIPMENT.

● PROGRAMS

BACKSTAGE:

RESTROOMS: THIS ROOM WILL HAVE ACCESS TO THE AUDITORIUM WITH ACOUSTICAL SEPARATION. THIS ROOM IS SET BACK IN THE SPACE USUALLY SPLIT LEVEL AND IS USED FOR CONTROLLING ALL FUNCTIONS OF A PRODUCTION.

GREEN ROOM:

DEDICATED SPACE FOR PREPARING FOR PERFORMANCES. SPACE FOR 10 PERFORMERS. MIRRORS, LIGHTING AND SOUND SYSTEM

MEN'S & WOMEN'S CHANGING ROOMS:

CHANGING SPACE FOR AT LEAST 5 PERFORMERS

Discussion:

Size of stage will be determined by program and use.

● PROGRAMS

Discussion:

Size of stage will be determined by program and use.

BACKSTAGE:

SCENE SHOP/ STORAGE: SHELL STORAGE FOR LARGE BACK DROPS. SPACE TO CONSTRUCT BACKDROPS. ACCOMMODATE 2 SINK MINIMUM

BACK STAGE STORAGE:

ROOM USED TO STORE STAGE EQUIPMENT IE. RISERS.

PIANO STORAGE:

ROOM USED TO HOUSE PIANO WHEN NOT IN USE ON STAGE

RECEIVING AND STAGING :

AREA DIRECTLY CONNECTED TO LOADING DOCK

SCENE YARD: OPEN OUTDOOR SPACE ENCLOSED WITH HIGH FENCE

● PROGRAMS

INSTRUCTIONAL SPACES:

DRAMA SUITE:

CLASSROOM FOR DRAMA CLASSES

FACULTY OFFICE:

TEACHER SPACE

COSTUME STORAGE:

HOUSES ROLLING RACKS OF CLOTHES FOR PERFORMANCES

SMALL PROP STORAGE :

HOUSES SMALL PROPS FOR PERFORMANCES

Discussion:

Size of stage will be determined by program and use.

● PROGRAMS

INSTRUCTIONAL SPACES:

MUSIC SUITE:

CLASSROOM AND PRACTICE ROOMS

FACULTY OFFICE:

TEACHER SPACE

PRACTICE ROOMS:

SMALL SPACES FOR 2-3 STUDENTS

BAND ROOM:

REHEARSAL ROOM AND CLASSROOM FOR BAND

ROBUST IN SIZE TO ACCOMMODATE THE LARGE PROGRAM

Discussion:

Size of stage will be determined by program and use.



● PROGRAMS

INSTRUCTIONAL SPACES: MUSIC SUITE

INSTRUMENT STORAGE:

STORAGE FOR VARIETY OF INSTRUMENTS

RECORDING STUDIO: (IF FEASIBLE AND WITHIN PROJECT BUDGET)

THIS WOULD BE A DEDICATED 3 ROOM SPACE WITHIN THE MUSIC SUITE. FOR INSTRUCTION FOR UP TO 4 STUDENTS AT A TIME. DUAL FUNCTION SPACE TO BE USED BY MULTIPLE PROGRAMS

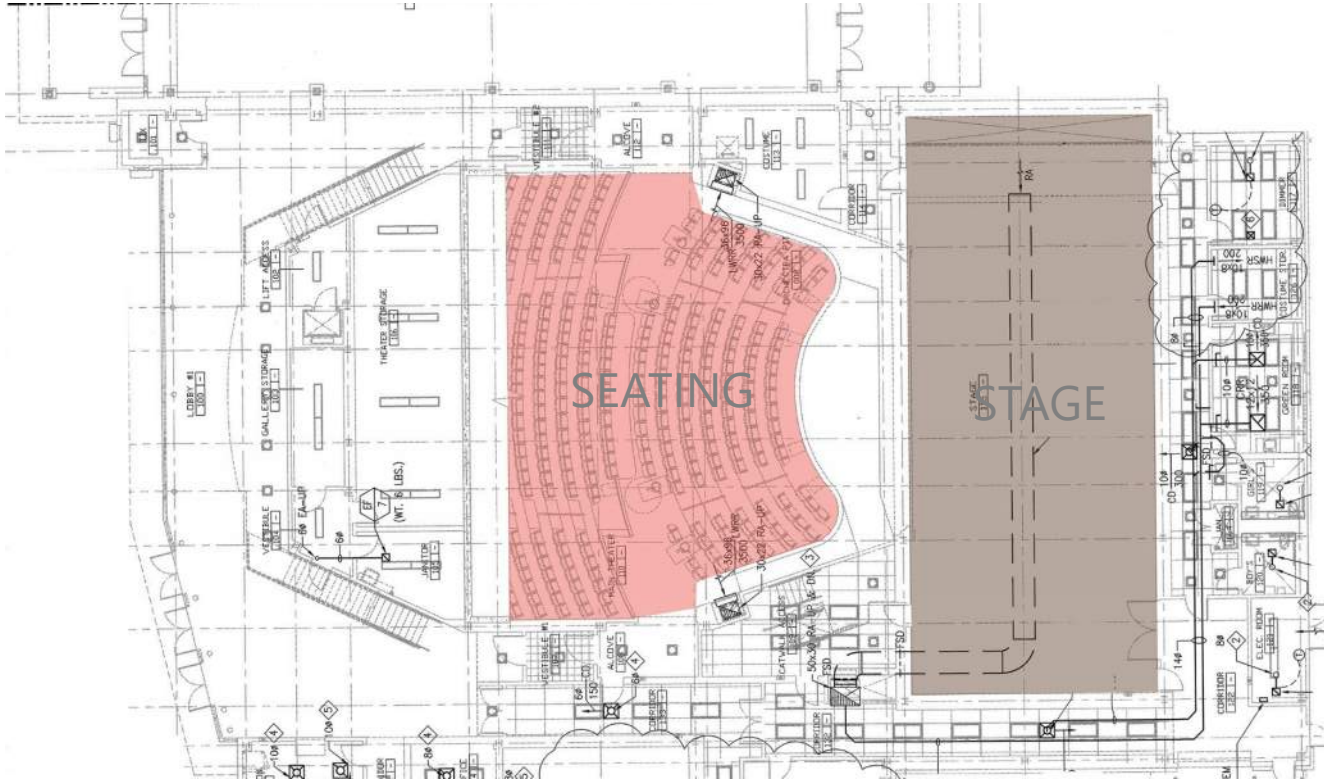
Discussion:

Size of stage will be determined by program and use.



PRECEDENTS

Aptos High School PAC – 450 seats



Key Take Away from Site Visit

- Liked Aesthetics of the theater
- Like Layout of rooms
- More Storage needed
- Larger Props Yard (Exterior)
- Scene Shop – dust collection and sink a must have
- Control room – very small and closed off – would make more open



CONTROL ROOM



STAGE EQUIPMENT



GREENROOM



RECIEVING



LOBBY



CONCESSION



LOADING DOCK DOOR



AUDITORIUM



BACKSTAGE



STAGE



CATWALK



SCENE SHOP



SCENE SHOP



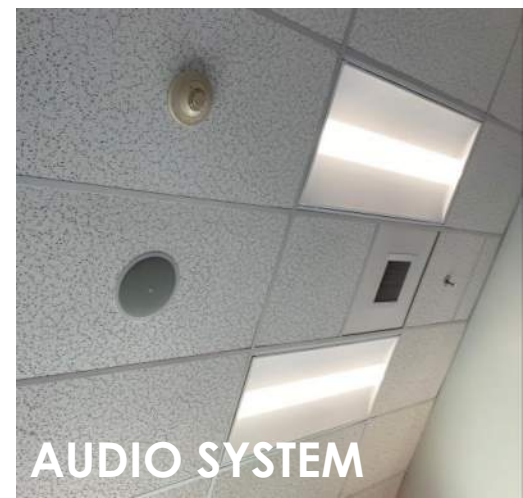
MAKE - UP



SCENE YARD



DIMMER ROOM



AUDIO SYSTEM

● PRECEDENTS

Cabrillo College Crocker Theater – 523 Capacity

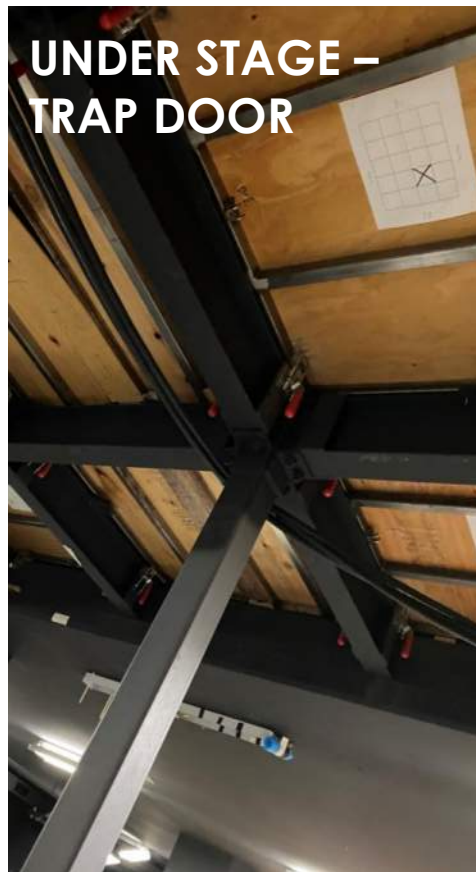


Key Take Away from Site Visit

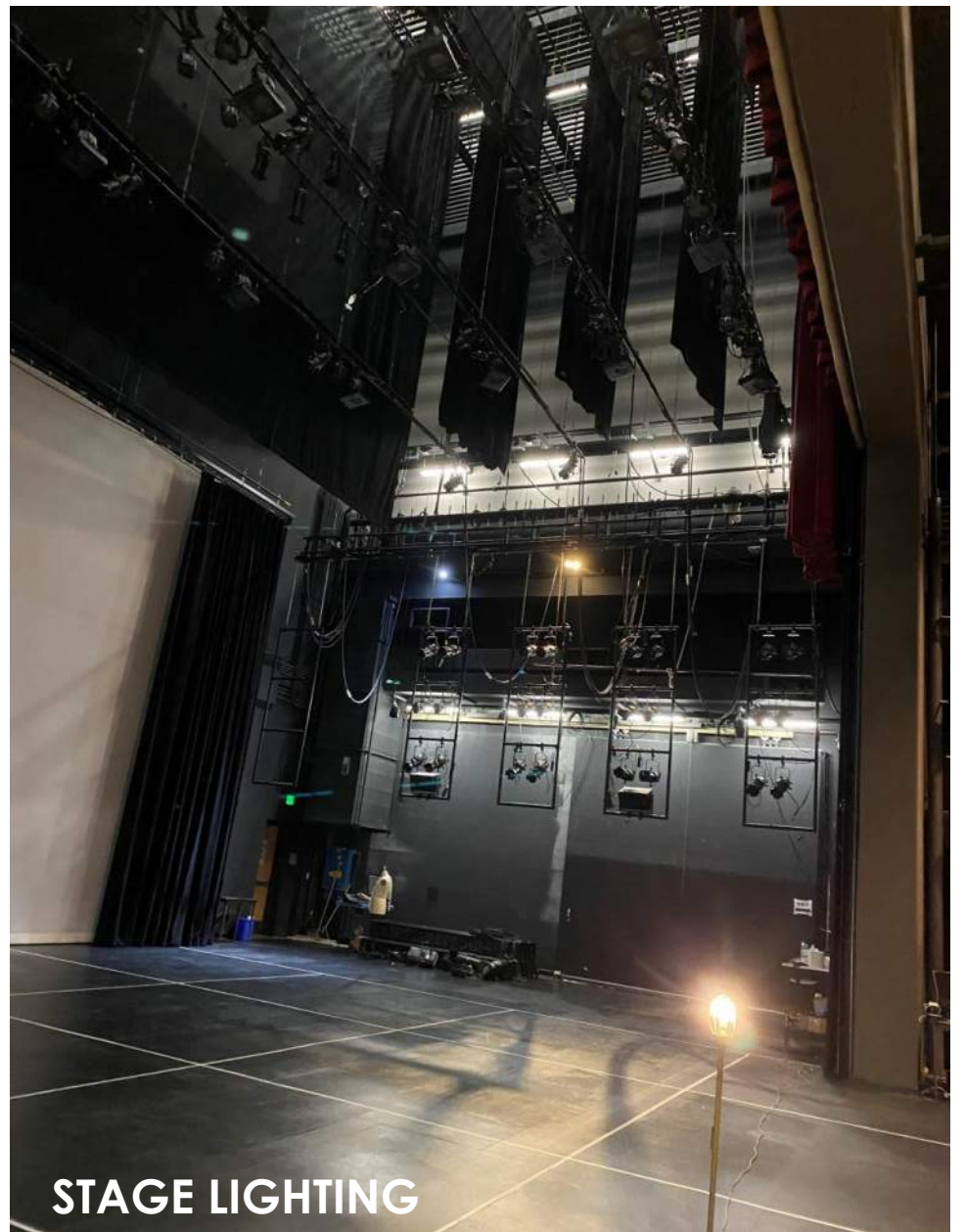
- Liked Aesthetics of the theaters
- Like Layout of rooms and adjacencies
- Great consideration given to back of house functions
- Props Yard (Exterior) ample size
- Scene Shop – Professional Level
- Control room – open to the theater with direct access
- Should be the benchmark for design



BLACK BOX



**UNDER STAGE –
TRAP DOOR**



STAGE LIGHTING



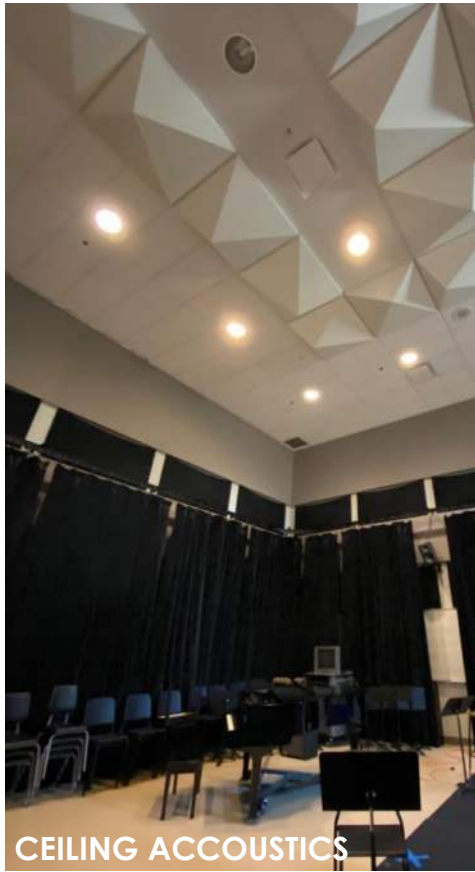
SEATING



BLACK BOX



STAGE ACCOUSTICS



CEILING ACCOUSTICS



STORAGE



INSTRUMENT
STORAGE



BAND ROOM



MAKE-UP



UNDER STAGE



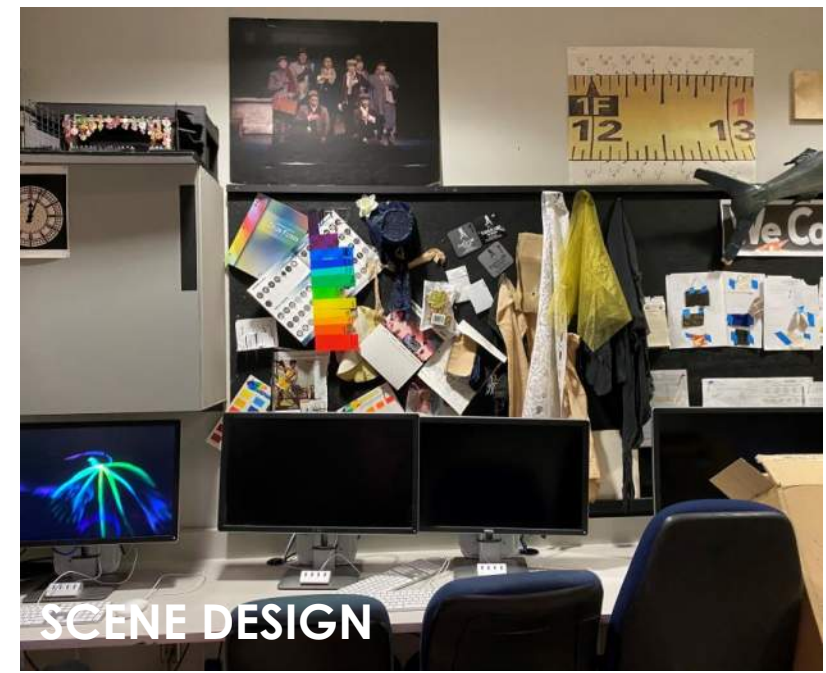
ORCHESTRA PIT



COSTUME



SCENE SHOP



SCENE DESIGN



SCENE DESIGN

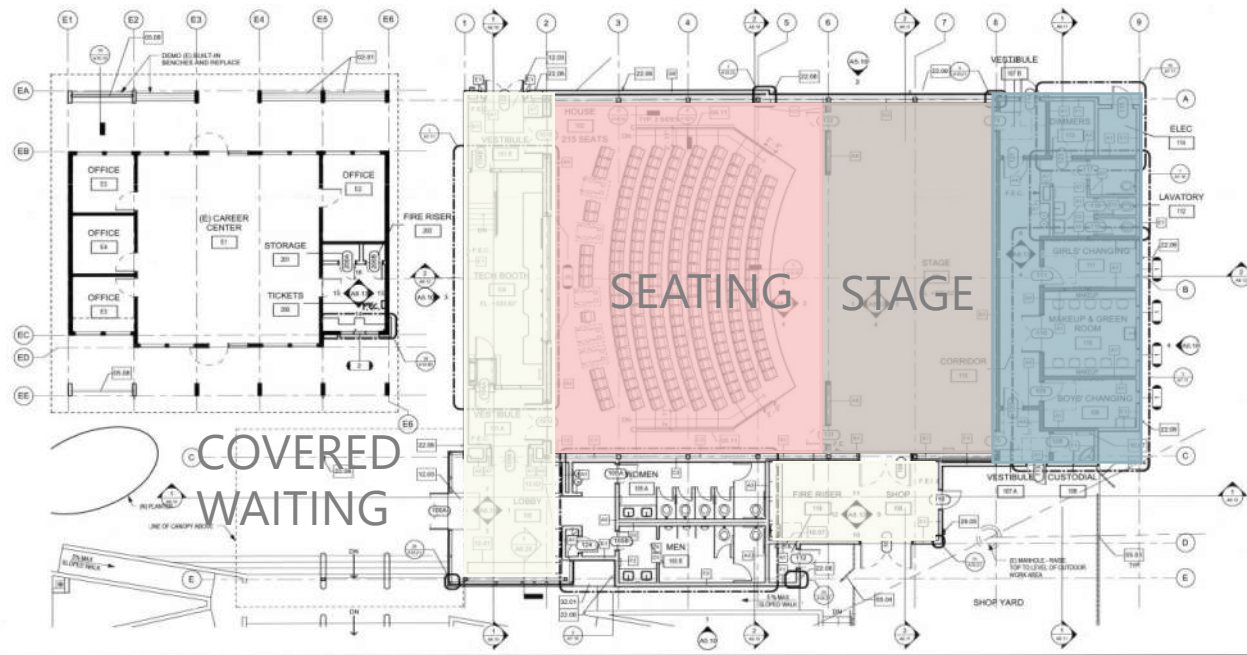


SCENE YARD

PRECEDENTS

San Lorenzo Valley High School PAC – 210 seats

Key Take Away from Site Visit



- No Pit for Orchestra – problematic during performances, taking up valuable stage sf
- AC Units cause problems on stage with props
- Fire alarm system is problematic during performances with smoke systems.
- No Center Aisle in main theater, problematic for people getting in and out of rows
- Not enough seating
- Wings are not large enough
- No enough storage currently
- Control Room – large space
- House lights are not efficient and require tall ladder to change out. Not ideal
- Video and Sound system are liked
- Scene Shop – dust collection and sink a must have
- Control room – very small and closed off – would make more open
- Dressing Rooms not large enough



BOX OFFICE

OUTDOOR GATHERING SPACE



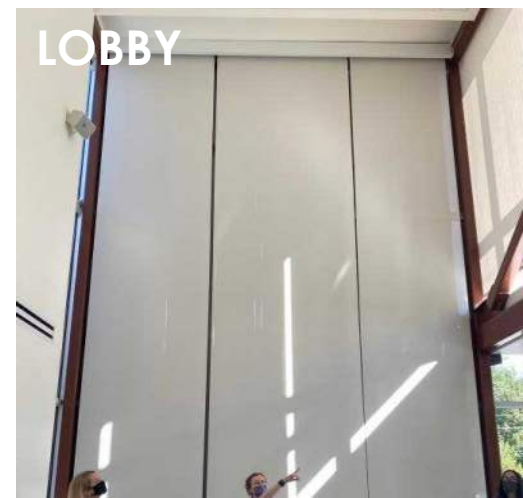
CONTROL ROOM



ACCOUSTICS



AUDITORIUM



LOBBY



BACK STAGE CORRIDOR



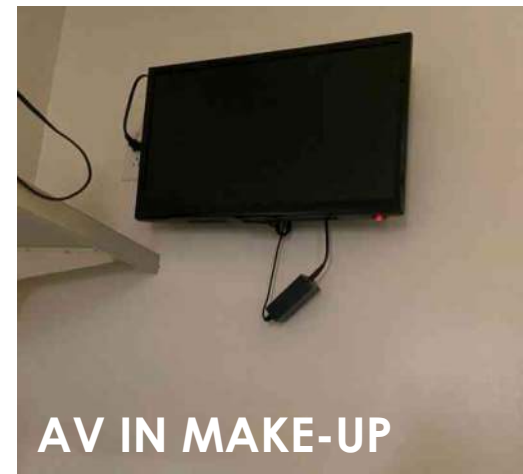
MAKE-UP



SCENE SHOP



SCENE YARD



AV IN MAKE-UP



SITE VICINITY



VICINITY





● SITE LOCATION

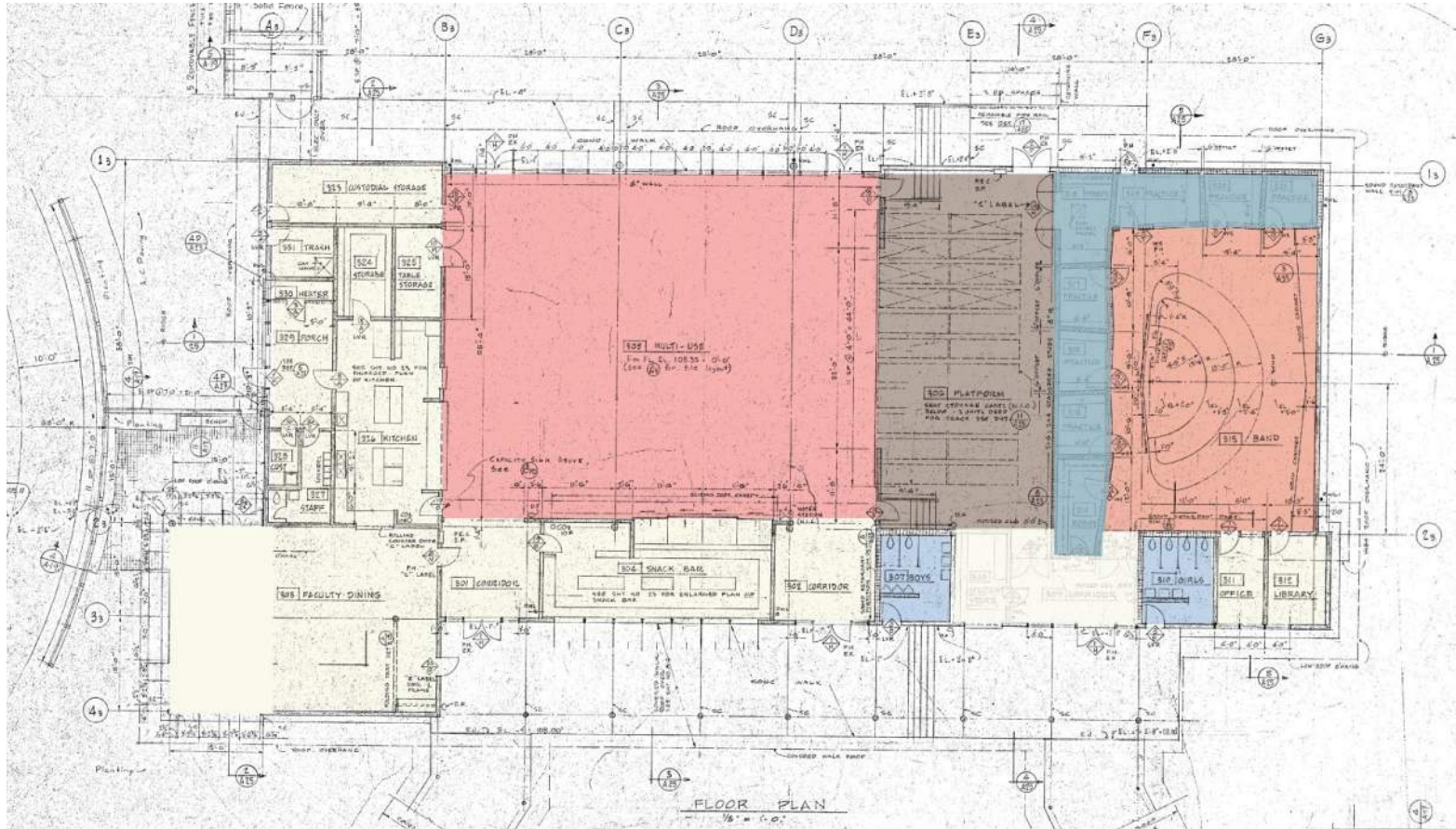
● LOCATION

Discussion:
Current drop-off use?

Linkage between
lower and upper
parking?

Other site
constraints?

EXISTING MPR



Discussion:

Current performance use of MPR.

Deficiencies

How to repurpose if PAC built

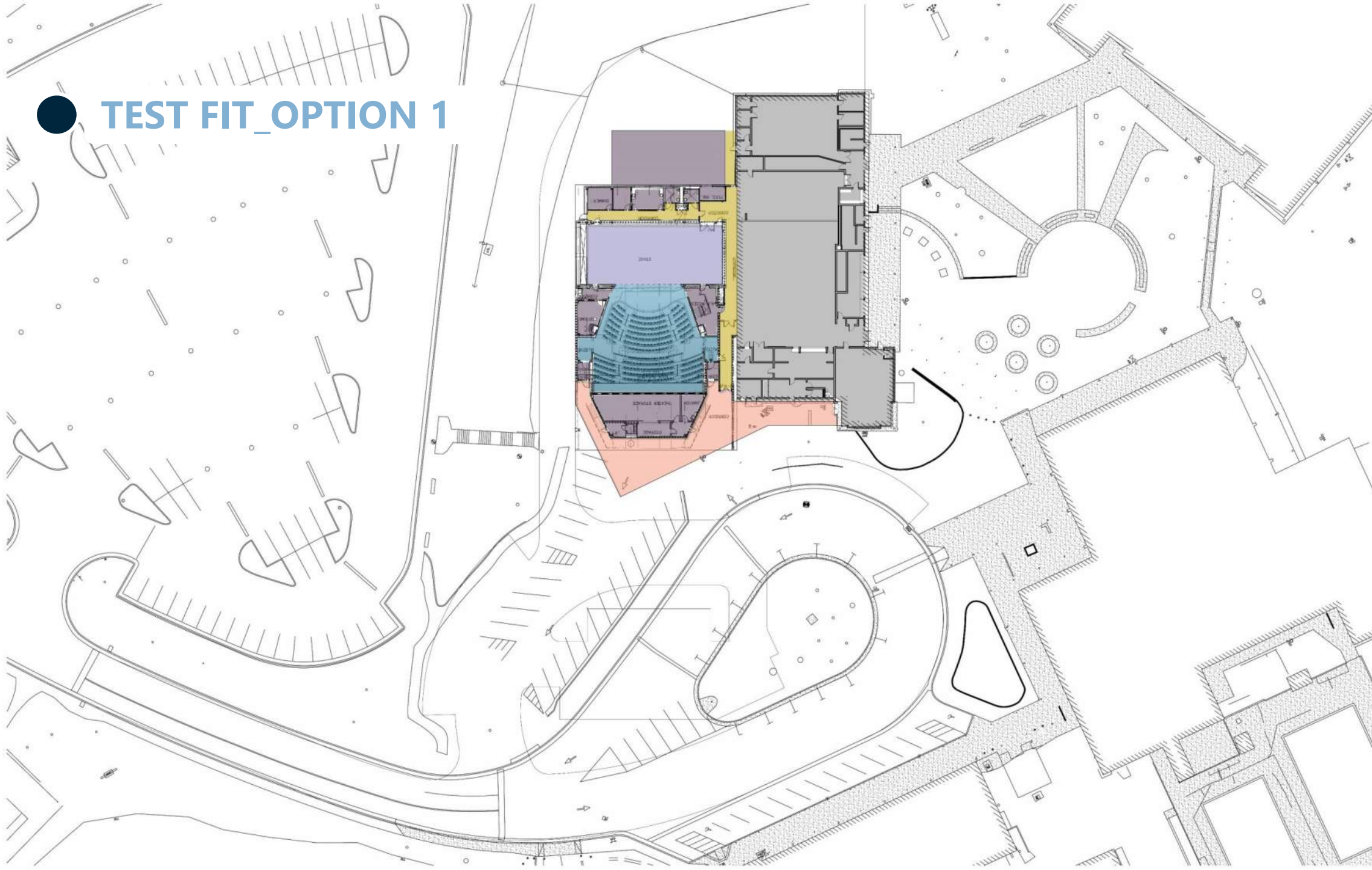
SOQUEL CURRENT PERFORMING ARTS SPACE – MPR

Soquel High School MPR – Occupancy 574

- Student Population: 1,173

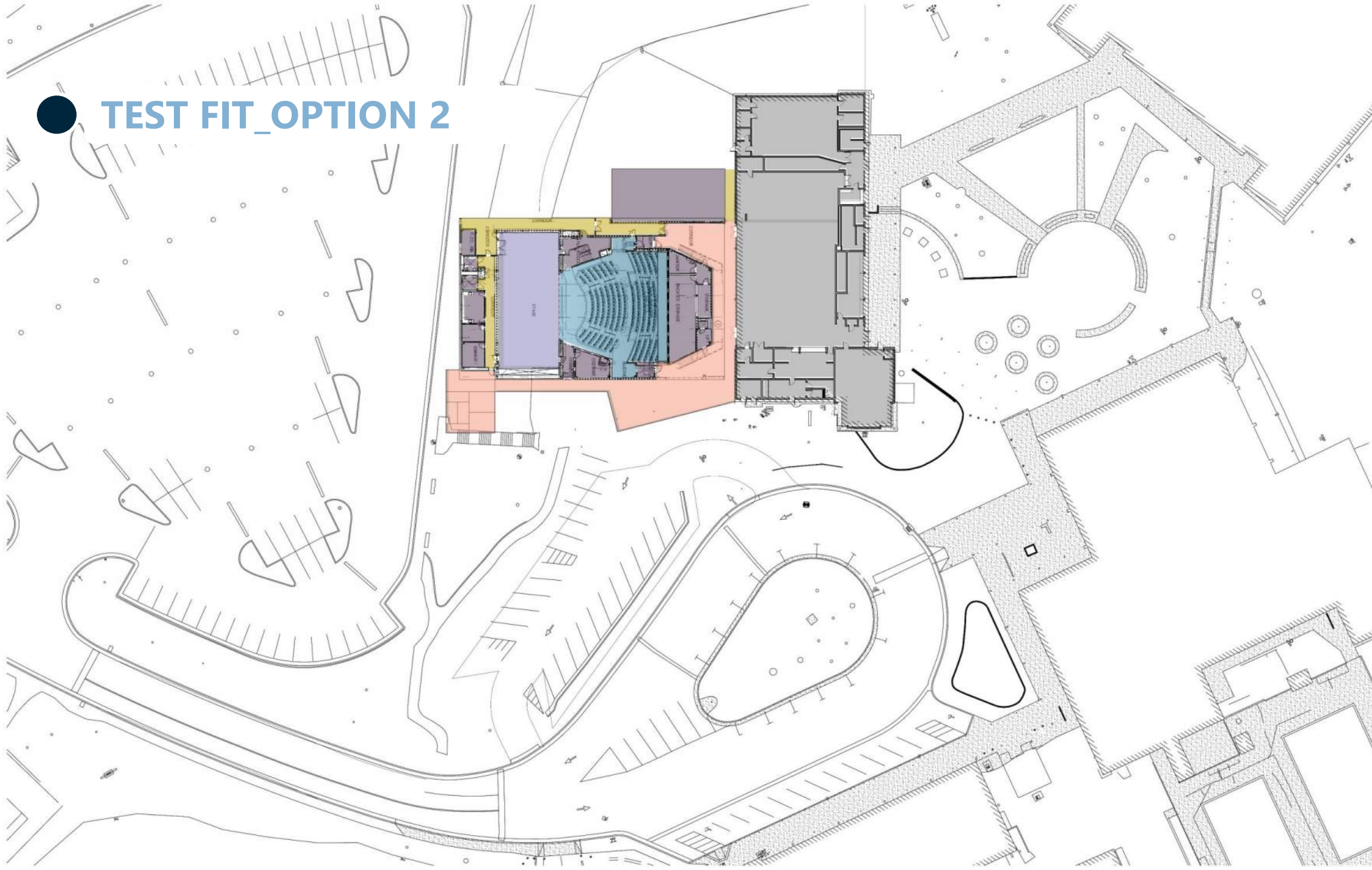


TEST FIT_OPTION 1



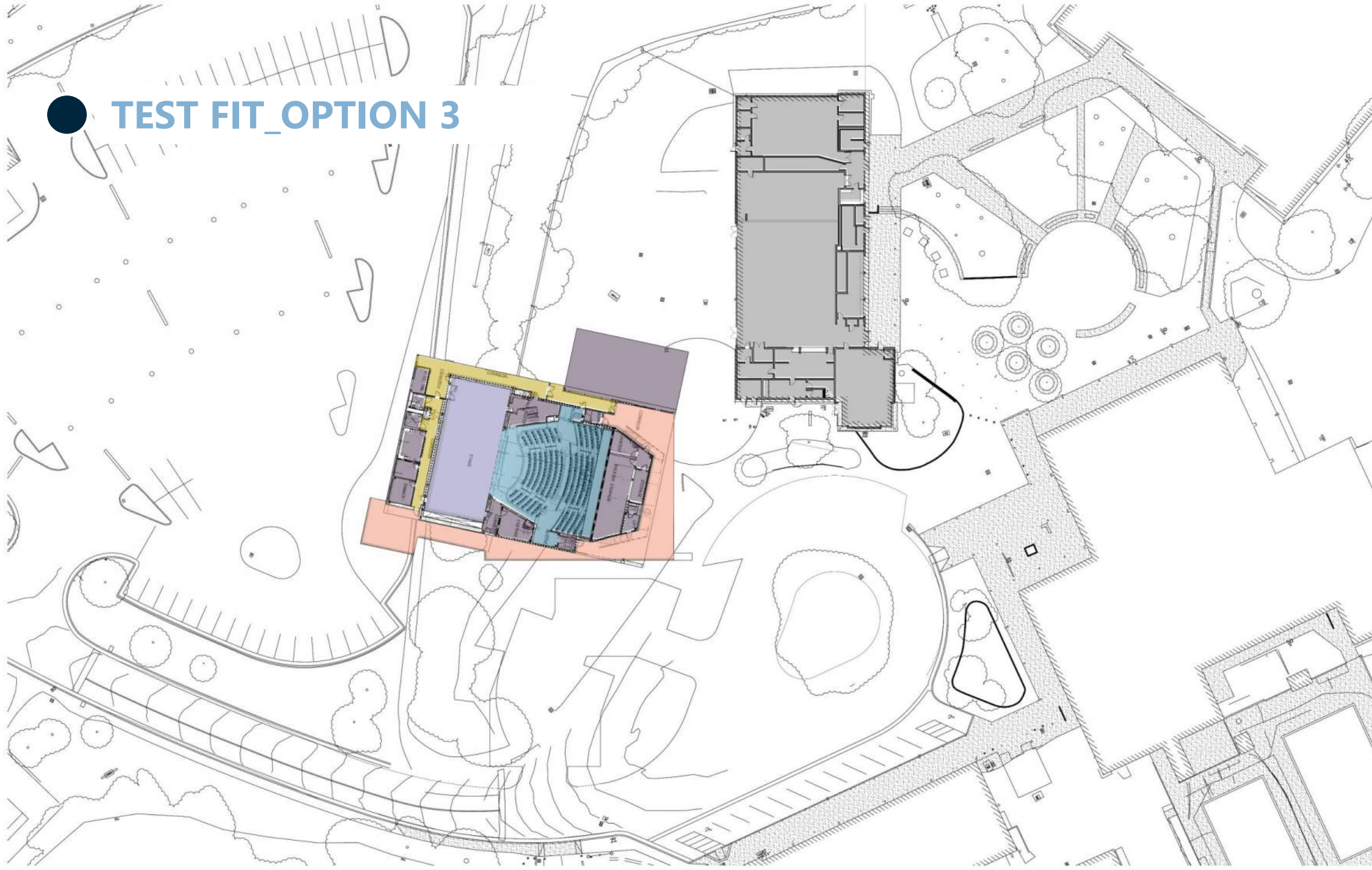


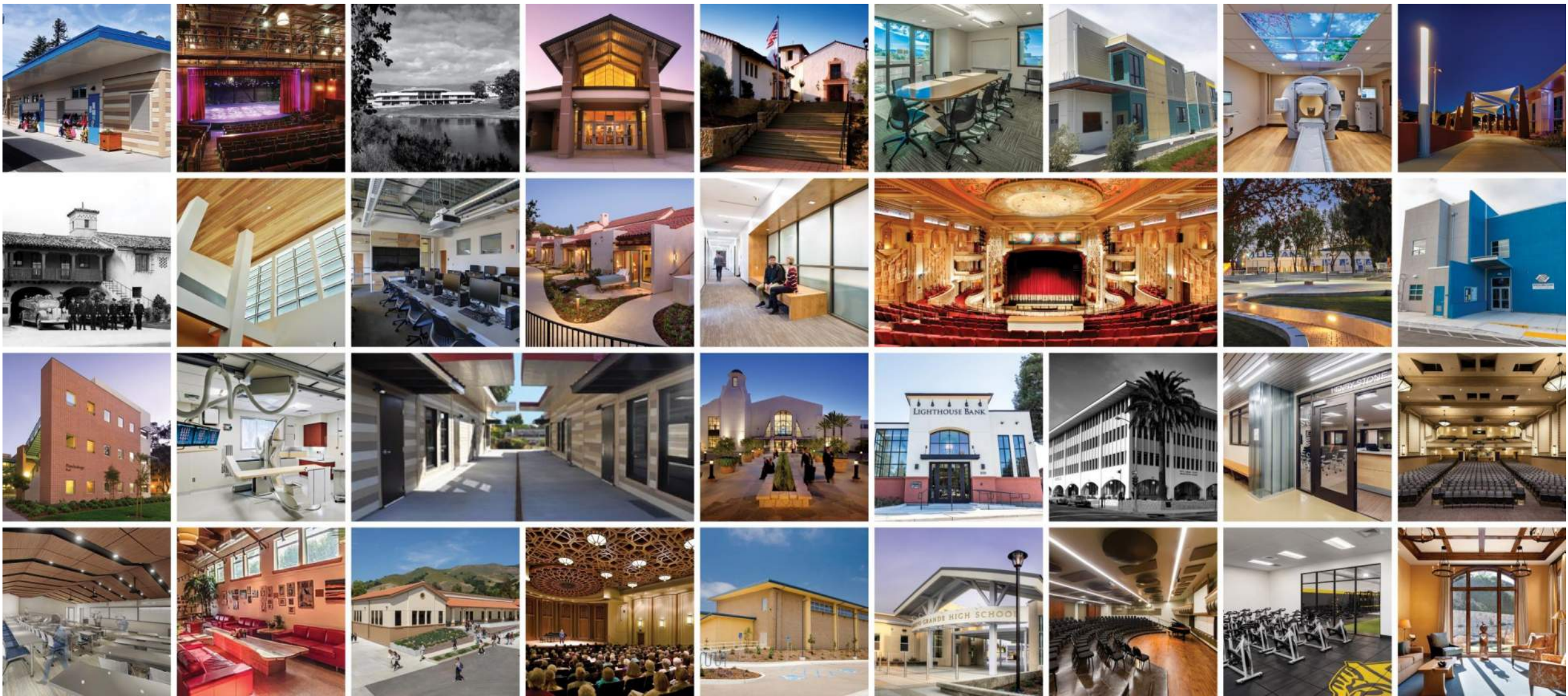
TEST FIT_OPTION 2





TEST FIT_OPTION 3





114 – YEAR DESIGN LEGACY | DEDICATED TO PROJECTS THAT ENRICH THE COMMUNITY

MADI | 196
ARCHITECTURE & PLANNING